

ELEANOR WEBER

No Private Problems Communication Card*

Your pen colour:	
Your name:	
Your father's name:	
Your religion:	
Your gender:	
Your sexual orientation:	
Your psyche-treatment:	
Your passport(s):	
Your occupation:	
Your clothing:	
Your sport:	
Your date of birth (D.O.B.):	
Your star sign:	
Your Chinese zodiac:	
Your eye colour:	
Your email address:	

Your character (please circle):

	Joan of Arc
Sandra Bland	
Monica Lewinsky	
	Alejandra Pizarrik
	Christine Villemin
Amy Winehouse	

Please sign here:

Date:

OFFICE USE ONLY

Numerological sign: _____

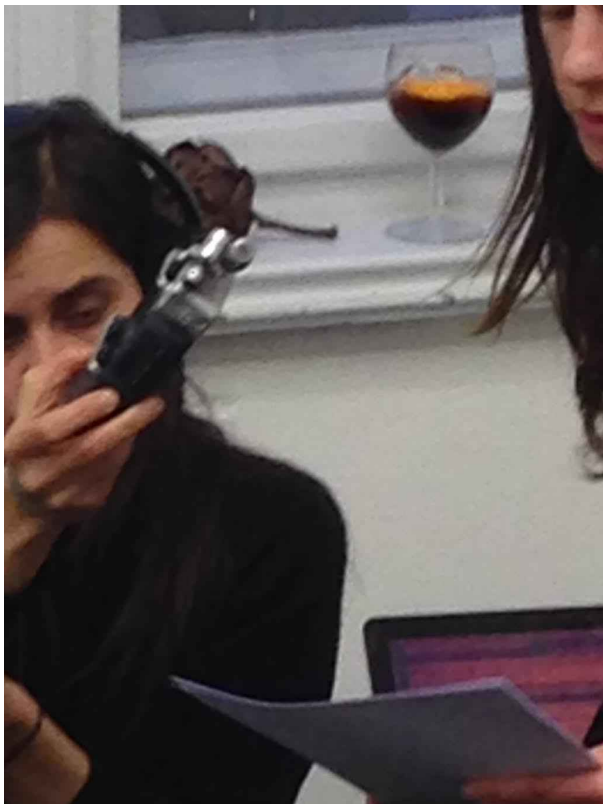
Passport power: _____

Stamp: Y / N

Drink: Y / N

* Through writing and returning this communication card you receive a stamp, a beverage and a text document related to you. You then agree to participate in a voice session at M.I. during opening hours.





I don't want to be an abstraction. I want this voice to have a body. You hear it don't you? You hear that the voice falters, that it contains a history and a culture, these things that only exist because there are bodies with language. You hear that my voice is particular, you would recognise it, if you knew me. If you know me, you will recognise it. There is something about its tone that is particularly bodily. That's not unique to me though, you all have it, we all have it.

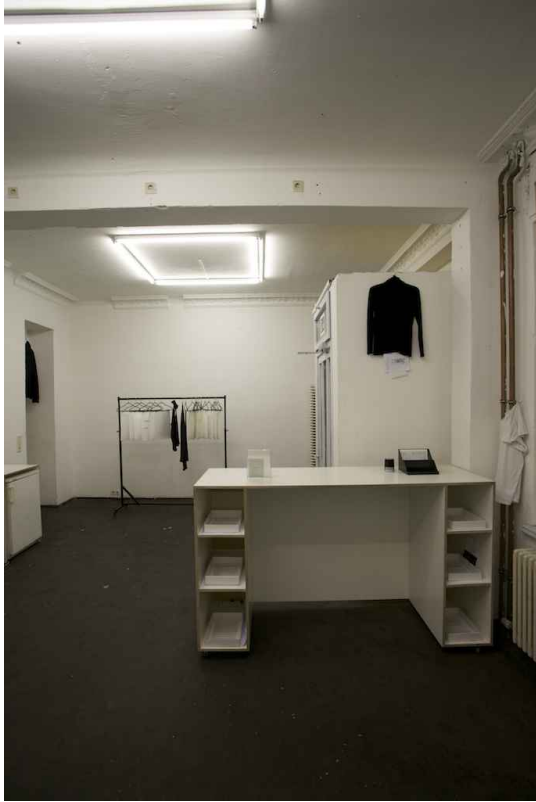
There is some sort of history here, a story, really, but it is fucked up. I can't tell you exactly how it is a story, the parts aren't narrative – they don't make sense in a linear way and the characters aren't very clear – there is a lot of overlap. It is a kind of script, a series of monologues, for I can't presume you want to dialogue. I will say that I want you to. I had to stop hiding behind other people's voices, other people's bodies.

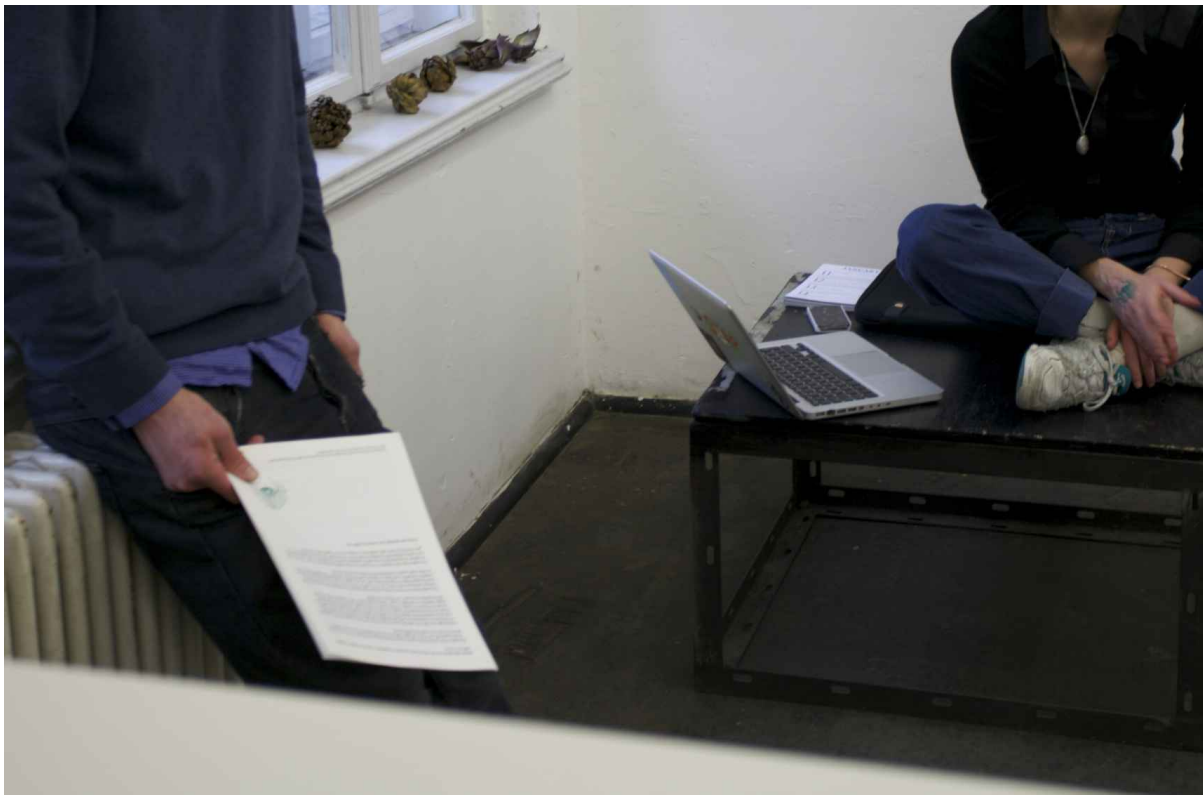
I wanted to make it entertaining for you; is this just another abstraction? I don't mind theatre, I like that we can suspend disbelief, suspend cynicism. And why should you believe what I'm saying anyway? Does a theatrical voice contain a lie more than a voice in the real life witness box, in the supreme court of justice?

<https://soundcloud.com/cicatrise/opening-speech/s-zzTbQ>











No Private Problems by Eleanor Weber opened at M.I/mi1glissé on 24th of February 2016, in Berlin. The custom typeface *Re: [Scan]* was designed by Ella Sutherland. *Opening Speech*, a text for the exhibition, was read live on opening night.